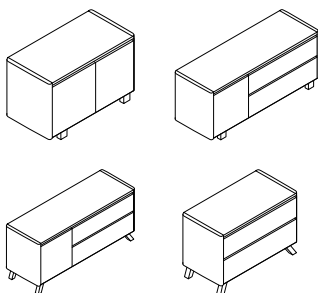




ferro credenza datasheet

Extent of Range

Mixture of doors and drawers in 2, 3 or 4 compartments



Delivery

This range is assembled on site by the Flexiform installation team, wrapped for protection.

Product Warranty

15 years subject to our standard T&C's. See the Flexiform Standard Warranty document for more information.

Features

Type: Single storage unit for boardrooms, meeting rooms or domestic use.

Carcass: 14swg to 20swg depending upon structural requirements of selected cabinet.

Doors: Soft closing doors with goose neck handles.

Drawers: Soft closing drawers with goose neck handles.

End Panels: Curved end panels.

Legs: A choice of 2 legs styles; black angled legs (bringing the unit up to 740mm high) and black straight legs (620mm high). Angled legs are constructed using 14swg 60mm x 30mm steel tube with feet levellers.

Tops: 25mm MFC with 2mm ABS edge in a choice of Flexiform's standard finishes.

Cable Management: Not available on this product.

Internal Components: Door compartments are complete with a central shelf, drawers have filing rails for the bottom drawer.

Black finish as standard.

Counterbalance Weights: Included where required.

Dimensions

Height: 620mm (straight legs), 740mm high (angled legs).

Depth: 515mm.

Width: 2 compartments: 1088mm, 3 compartments: 1600mm, 4 compartments: 2116mm.

Materials

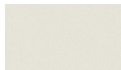
MFC Top Panels: 25mm melamine faced chipboard (M.F.C) with 2mm ABS matching edging or contrasting edging. British standard 476 class 1 surface spread of flame. Meets E1 European standards on Formaldehyde emissions.

Steel: Clear coat lacquer, shows unique quality of the panels.

MFC Band 1 Finishes



White 25mm MFC with matching edge. Code: WHM



Grey 25mm MFC with matching edge. Code: MOG



Dust Grey 25mm MFC with matching edge. Code: DGM



Oak 25mm MFC with matching edge. Code: MOK*



Walnut 25mm MFC with matching edge. Code: MOW*



White 25mm MFC with contrasting oak edge. Code: WHO



White 25mm MFC with contrasting black edge. Code: WHB

**Please note, we cannot guarantee continuity of these finishes.*

MFC Band 2 Finishes



Cashmere Grey 25mm MFC with matching edge. Code: MSC



Antique Rose 25mm MFC with matching edge. Code: MAR



Denim Blue 25mm MFC with matching edge. Code: MDB



Reed Green 25mm MFC with matching edge. Code: MRG



Sevilla Ash 25mm MFC with matching edge. Code: MSA



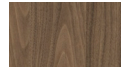
Natural Nebraska Oak 25mm MFC with matching edge. Code: MNO



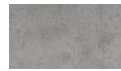
Natural Hamilton Oak 25mm MFC with matching edge. Code: MHO



Truffle Brown Denver Oak 25mm MFC with matching edge. Code: MDO



Natural Carini Walnut 25mm MFC with matching edge. Code: MCW



Light grey Chicago Concrete 25mm MFC with matching edge. Code: MCC

Steel Finishes

Standard Flexiform Ferro clear coat laquer.



Clear coat lacquer
Code: CCG

Leg Finish

Black only.



Black. RAL9011
Code: BLS

Internal Components

Black only.



Black. RAL9011
Code: BLS

Product Environmental Certification



Environmental

Recycled Content: 30.05%

Recyclable Content: 94.55%