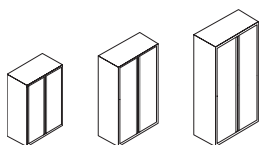




ferro hinged door storage datasheet

Extent of Range

Ferro Hinged Door storage is available in 800mm and 1000mm wide. Heights from 720mm to 2007mm to compliment the Ferro range.



Delivery

This range is delivered pre-assembled by the Flexiform installation team, wrapped for protection.

Product Warranty

15 years subject to our standard T&C's. See the Flexiform Standard Warranty document for more information.

Product Certificate

BS EN 14073-2:2004, BS EN 14073-3:2004, BS EN 14074:2004.

Features

Carcass: 4 stage treatment process steel. Fully welded for exceptional rigidity and stiffness. Side panels are non load bearing and are fixed to top, back and base. No joins in the carcass to front or side elevations.

Doors: Fully welded 18 gauge steel with stiffening rails.

Hinges: 3 hinges per side, designed for 120 degree opening ensuring clear access space for users.

Levelling: Floor levelling feet supplied.

Handles: Full height recessed handle for easy opening and closing for all users with 2 point locking system.

Components: 20swg inner panels incorporate 12.7mm slot centres to enable full range of internal components to be fitted.

Components

Pigeon holes, plain shelves, slotted shelves, lateral plain shelf with fixed suspension rail, lateral suspended filing rail, coat shelf with coat rail.

Dimensions

Heights: 1017mm, 1322mm, 1677mm, 2007mm.

Heights (with MFC top): 720mm, 740mm, 1090mm, 1110mm.

Widths: 800mm, *825mm and 1000mm.

Depth: 475mm.

Materials

MFC Top Panels: 25mm melamine faced chipboard (M.F.C) with 2mm ABS matching edging or contrasting edging. British standard 476 class 1 surface spread of flame. Meets E1 European standards on Formaldehyde emissions.

Steel: Clear coat lacquer, shows unique quality of the panels.

MFC Band 1 Finishes



White 25mm MFC with matching edge. Code: WHM



Grey 25mm MFC with matching edge. Code: MOG



Dust Grey 25mm MFC with matching edge. Code: DGM



Oak 25mm MFC with matching edge. Code: MOK*



Walnut 25mm MFC with matching edge. Code: MOW*



White 25mm MFC with contrasting oak edge. Code: WHO



White 25mm MFC with contrasting black edge. Code: WHB

**Please note, we cannot guarantee continuity of these finishes.*

MFC Band 2 Finishes



Cashmere Grey 25mm MFC with matching edge. Code: MSC



Antique Rose 25mm MFC with matching edge. Code: MAR



Denim Blue 25mm MFC with matching edge. Code: MDB



Reed Green 25mm MFC with matching edge. Code: MRG



Sevilla Ash 25mm MFC with matching edge. Code: MSA



Natural Nebraska Oak 25mm MFC with matching edge. Code: MNO



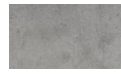
Natural Hamilton Oak 25mm MFC with matching edge. Code: MHO



Truffle Brown Denver Oak 25mm MFC with matching edge. Code: MDO



Natural Carini Walnut 25mm MFC with matching edge. Code: MCW



Light grey Chicago Concrete 25mm MFC with matching edge. Code: MCC

Steel Finishes

Standard Flexiform Ferro clear coat laquer.



Clear coat lacquer
Code: CCG

Product Environmental Certification



Product Recyclable Content

Recycled Content: 36.97%

Recyclable Content: 99.11%